

DIGITAL INDUSTRIES SOFTWARE

# Harness the power of Siemens DFM on the cloud with PCBflow

Affordable. Smart. Scalable. Sustainable

- Find and fix PCB design flaws before handoff to manufacture
- Save time and reduce re-design/rework
- Intuitive interface requires no training. Use it immediately
- Access industry standard DFM rules, including IPC compliance checks
- Connect with your preferred manufacture to access real-life DFM rules
- Calculate BOM cost and check component availability
- Get instant price estimates for full projects

## Build a better PCB

Manufacturability of a PCB is dependent on the physical and mechanical limitations of the machines and processes involved. Board layout and BOM may affect cost, yield and reliability. In practice, PCB fabricators and EMSs spend significant pre-production time and engineering resources to identify and mitigate manufacturability issues. PCBflow allows you to test for manufacturability before handoff and eliminate lengthy pre-production correspondence. Avoid delays in production and ensure quality by identifying and addressing most common issues before they go to manufacture.

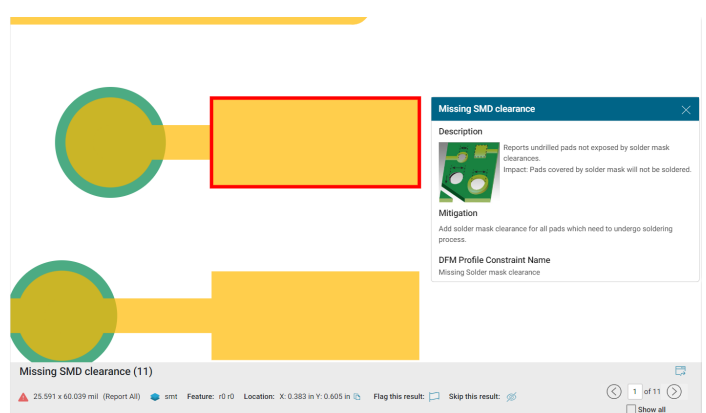
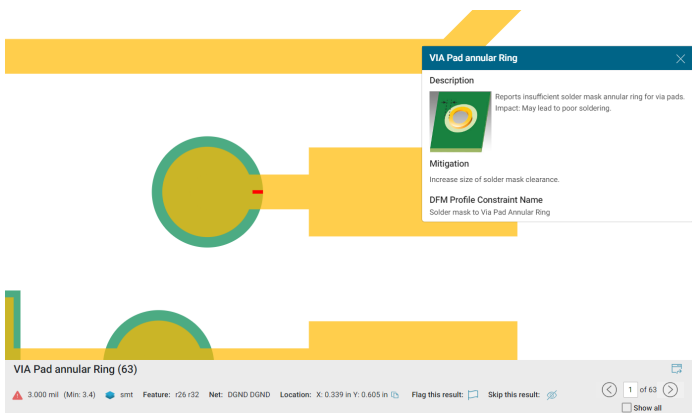
**SIEMENS**

[siemens.com/eda](https://www.siemens.com/eda)



**Test for compliance to avoid re-design**

PCBflow enables manufacturers to quickly set up manufacturing capabilities and constraints in a standardized way that is easily used by designers to test boards for compliance without fuss. In fact, the all the designer must do in PCBflow is select their manufacturer and let the software point out where the layout does not meet the requirements.



**Use built-in DFM rules or easily create your own**

In this fast-paced environment, we don't always have time for long phone calls or endless email transactions to set up and adjust long lists of rules. With PCBflow, the rules are already there waiting to be used in your DFM analysis. You can upload any common design data format including ODB++, IPC2581 or Gerber and get started immediately.

For designers who are not yet decided on a specific manufacturer, PCBflow also supplies a variety of starter DFM profiles, created by experts to represent compliance with industry standards, including IPC rules.

Easily create custom DFM rules using the Online DFM Builder, or manage more complex DFM rules with the Analysis Definition Manager.

**Good software makes your work easier**

PCBflow is online software accessed through your internet browser. The intuitive interface makes it easy to upload your design files, select your DFM profile and get started running analysis. In-app guidance and tutorials are a click away; say goodbye to complex instruction manuals and expensive training.

PCBflow provides an interactive online viewer to investigate the results of analysis, even if you don't have access to the original CAD software where the layout was created. Zoom, pan, select, and measure as you review potential issues pinpointed by PCBflow DFM analysis. Results can be flagged, tagged, and downloaded to Excel or PDF format for offline review.

Company	Company type	Country	Connection
DFM by Siemens	Partner/Distributor	Israel	Connected
IPC	Partner/Distributor	United States of America	Connected
Nistec	PCB Assembly	Israel	Connected
Elco	PCB Fabrication	Italy	Connected
etek ltd	PCB Fabrication	Israel	Invitation sent
arbe robotics	PCB Assembly, PCB Fabrication	Israel	
INNOVIZ	Design/Layout	Israel	
Tesla Inc		United States of America	Invitation sent
Bittell Electronics Inc	PCB Assembly, PCB Fabrication	Canada	
CADLOG GROUP SAS	Partner/Distributor	France	

Available DFM Profiles	
<b>High Density - Advanced</b> Analysis type: Fabrication (DFP) Status: Public Industry: Commercial Description: High volume, High Density Interconnect (HDI) Any layer, ELIC or equivalent process - Max. layers 16, Min. layers 2, Max. thickness 86mil - Trace width 2-9mil, trace spacing 2-9mil depending on copper weight - Inner Copper Weights: 1/3 oz, 5 oz, 1 oz - Outer Copper Weights: 3/8 oz, 5 oz, 1 oz - Max. non-plated core thickness 45mil, Warp and twist max 0.05m/in	<b>High Density - Standard</b> Analysis type: Fabrication (DFP) Status: Public Industry: Commercial Description: High volume, High Density Interconnect (HDI) Any layer, ELIC or equivalent process - Max. layers 12, Min. layers 6, Max. thickness 47mil - Trace width 2-9mil, trace spacing 2-9mil depending on copper weight - Inner Copper Weights: 1/3 oz, 5 oz, 1 oz - Outer Copper Weights: 3/8 oz, 5 oz, 1 oz - Max. non-plated core thickness 45mil, Warp and twist max 0.05m/in
<b>Flexible - Advanced</b> Analysis type: Fabrication (DFP) Status: Public Industry: Commercial Description: Mid volume, high-end FLEXIBLE PCB - Max. layers 14, Max. thickness 100mil - Trace width 2-9mil, trace spacing 2-9mil depending on copper weight - Inner Copper Weight: 1/3 oz	<b>Flexible - Standard</b> Analysis type: Fabrication (DFP) Status: Public Industry: Commercial Description: Mid volume, high-end FLEXIBLE PCB. Max. layers 12, Max. thickness 62mil - Trace width 2-9mil, trace spacing 2-9mil depending on copper weight - Inner Copper Weight: 1/3 oz



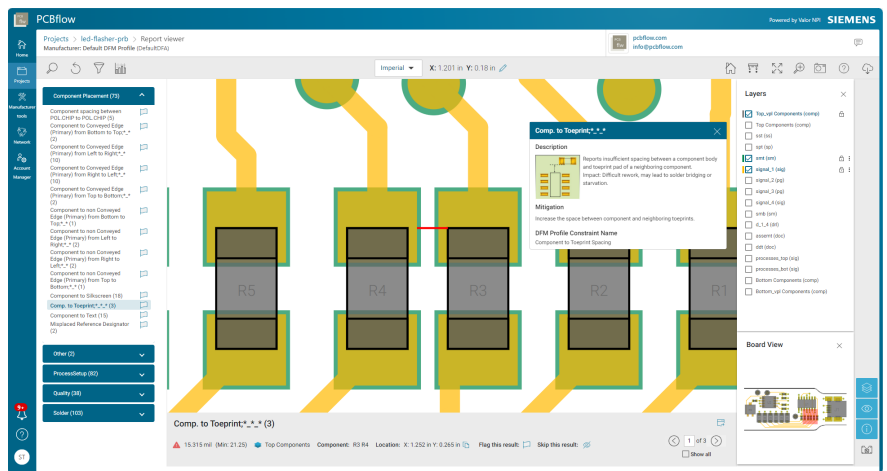
**Manage DFM Profiles**  
Manage your existing DFM profiles.



**Online DFM Builder**  
Quickly set up a basic fabrication DFM profile.



**Generate advanced DFM Profiles**  
Access the Analysis Definition Manager to create full custom DFM profiles.

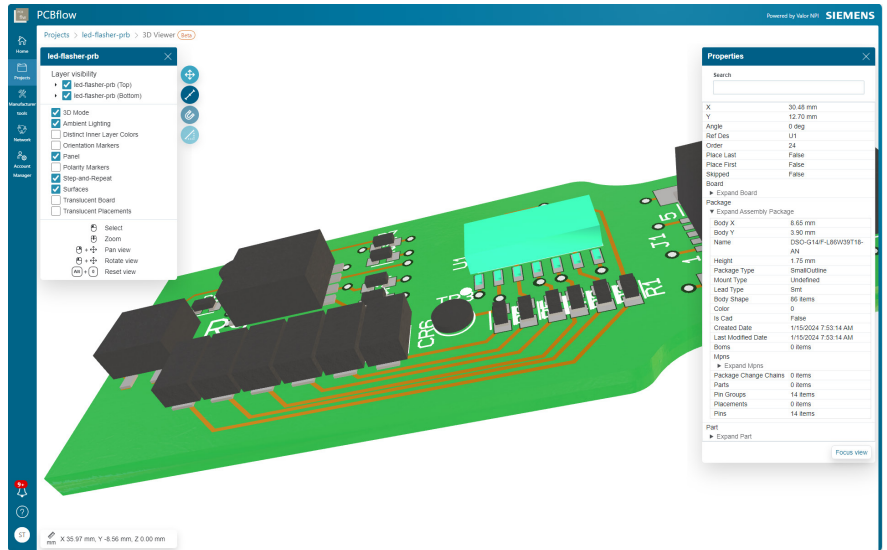


Use the unique online 3D Viewer to visualize your board. Zoom, pan, rotate, select, and measure, including translucent layers, component and feature information.

**Components are included.**

PCBflow uses accurate part geometry sourced from the Valor Part Library so that assembly analysis gives exclusive and valuable insight about pin contact area, compliance with solderability rules, component placement and spacing issues and more.

Up-to-date component pricing and availability is checked on demand, sourced from Supplyframe databases. Select from hundreds of global part distributors to calculate cost and ensure that the parts you need can be sourced on time and in the quantity required.



PCBflow BOM Pricing interface showing a summary of parts and a detailed table of components.

**Summary:** 20 Total Parts, 05 Not found, 00 Item obsolete, 01 Lower than MOQ, 00 Out of stock.

Part no.	Qty	ROHS	Description	MPN	Distributor	Matches	Price per board	Total boards price	Risk rank	Spare
G8313005-223	4	Not found	CAP.022UF.10%.50V.C...	TDK C1608X7R1H223K	Arrow Electronics \$0.12550 1289 / 1	Not found			Not found	
G8313005-220	13	COMPLIANT	CAP.22PF.5%.50V.NFO...	Kemet C0603C220J5GAC	Arrow Electronics \$0.10560 33003 / 1	Suggested match	\$0.10560	\$0.10560	Not found	0
G8313005-331	1	COMPLIANT	CAP.330PF.10%.50V.CO...	Axix 0603SA331KAT2A	Arrow Electronics \$0.10560 33003 / 1	Suggested match	\$0.10560	\$0.10560	Not found	0
G8314000-106	7	Not found	CAP.10UF.+80-20%.6.3...	Axix 0805AG106ZAT2A	Mouser Electronics \$0.37000 2819 / 1	Suggested match	\$2.59000	\$2.59000	Not found	0
DB9_USB_SERIAL_NGR	1	Not found	CONN.4 PIN.JACK.JST P...	Jst	Arrow Electronics \$0.08700 3932 / 1	Not found			Not found	
G8313005-470	17	COMPLIANT	CAP.47PF.50V.10%.COG...	Axix 0603SA470KAT2A	Arrow Electronics \$0.37000 2053 / 1	Suggested match	\$1.47900	\$1.47900	Not found	0
G8301933-227	1	COMPLIANT	CAP.220UF.20%.35V.0.2...	Nic NRWA221MSV1DX12.5F	Arrow Electronics \$0.36420 2053 / 1	Suggested match	\$0.36420	\$0.36420	7.0063725	0
G8312001-104	80	COMPLIANT	CAP.1UF.10%.10V.XSR...	Kemet C0402C104K8PAC	Arrow Electronics \$0.03000 \$74 / 1	Suggested match	\$2.40000	\$2.40000	Not found	0
G8315003-105	2	COMPLIANT	CAP.1UF.25V.+80-20%...	Axix 1206XG105ZAT2A	Verical \$0.08600 \$9100 / 1	Suggested match	\$0.17200	\$0.17200	Not found	0
G8301934-104-278	1	Not found	CAP.270UF.20%.35V.A...	Panasonic EBUF1C1V272L	DigKey \$0.82000	Not found			Not found	

**Instant project price estimates and RFQ**

Price estimates including materials and labor are available from participating manufacturers via our QuickPrice interface, powered by Boardera technology. Or, submit your project to get a full price quote.

**Share securely, when you're ready**

By default, your project data is accessible only to you on PCBflow. When you are ready to share, you can notify other PCBflow subscribers and control access to your projects. This allows seamless collaboration between designer and manufacturer when needed. No more ftp servers, large emails or additional charges for data transfer services.

Custom DFM profiles are protected IP and cannot be transferred or downloaded by other companies on PCBflow, or by third parties. DFM profile status determines the use of your DFM profiles. Public profiles can be used by all PCBflow subscribers to run DFM and review the results. Network profiles require a connection between the companies, and private profiles can only be used by your company.



**A-LEVEL**

<b>Analysis type</b>	<b>Industry type</b>
Fabrication & Assembly	Commercial
<b>Last modified</b>	<b>Owner</b>
15 September 2023	pcb engineer
<b>Description</b>	
Class A designs	

Public - All PCBflow users

Private - Visible only to you

Public - All PCBflow users

Network - Connections only

Peer To Peer - Peer company



### Join the PCBflow Network

Provide your company logo and contact information to join the growing list of companies in the PCBflow network. Gain visibility, and let others know what services you offer. Connect with other companies to communicate and gain access to use reserved, network-only DFM profiles.

### Affordable and scalable

As an online service, PCBflow is a flexible and affordable solution for your company. By eliminating the need to purchase and install software, you pay only for the work that you do with PCBflow. We believe that even small businesses deserve access to world class software. As your business grows, PCBflow grows with you allowing you to scale up as needed.

### Help to save our planet

Create PCB layouts sustainably. Plan in advance to support cleaner manufacturing processes and responsible component sourcing. Reduce waste of materials, water, and energy by testing your design for compliance in advance to avoid rework and scrap. Reduce commute and improve communication by choosing online tools to work digitally; no install, setup or upgrades required. Act locally, think globally, plan ahead to make a difference with PCBflow.



Siemens Digital  
Industries Software  
[siemens.com/software](https://www.siemens.com/software)

Americas  
1 800 498 5351

Europe  
00 800 70002222

Asia-Pacific  
001 800 03061910

For additional numbers,  
click [here](#).