

PCBflow

Accelerating design-to-manufacturing handoff by connecting designers and manufacturers for instant DFM analysis

Benefits

- Saves time and costs in the design-to-manufacturing handoff process by addressing manufacturability issues during the design phase
- Connects designers and manufacturers to perform specific design for manufacturing (DFM) analysis based on the actual process capabilities of a chosen manufacturer
- Provides a secure, cloud-based, collaborative environment with no IT investment

Features

- Fast and easy — fabrication DFM analysis in two simple steps
- Smart, self-explanatory and interactive — DFM report includes filtering, statistics, summary tables and error grouping
- Downloadable PDF report for easy sharing
- Powered by the Valor NPI engine, an industry standard for DFM analysis

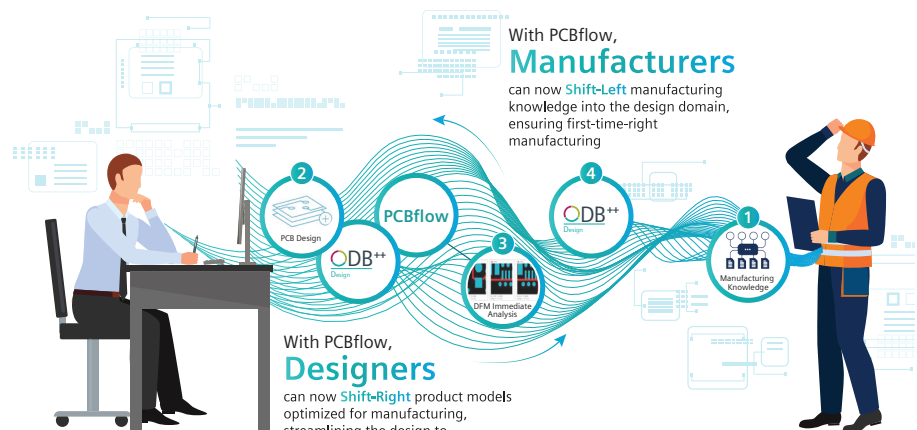
PCBflow is an online tool and collaboration space that accelerates the design-to-manufacturing handoff process by connecting designers directly with manufacturers. It enables a DFM analysis using the current constraints for a specific manufacturer during the early stages of the design process, reducing design iterations, costs and time-to-market.

As a cloud-based tool, PCBflow requires no installation or configuration. Designers can simply upload ODB++ Design files into the secure cloud environment and select one or more manufacturers to apply process capabilities to the DFM analysis. PCBflow even supports flex and rigid-flex DFM analysis. PCBflow then guides through design violations, providing an interactive, web-based analysis and a downloadable PDF report for sharing.

A new vision for electronics manufacturing

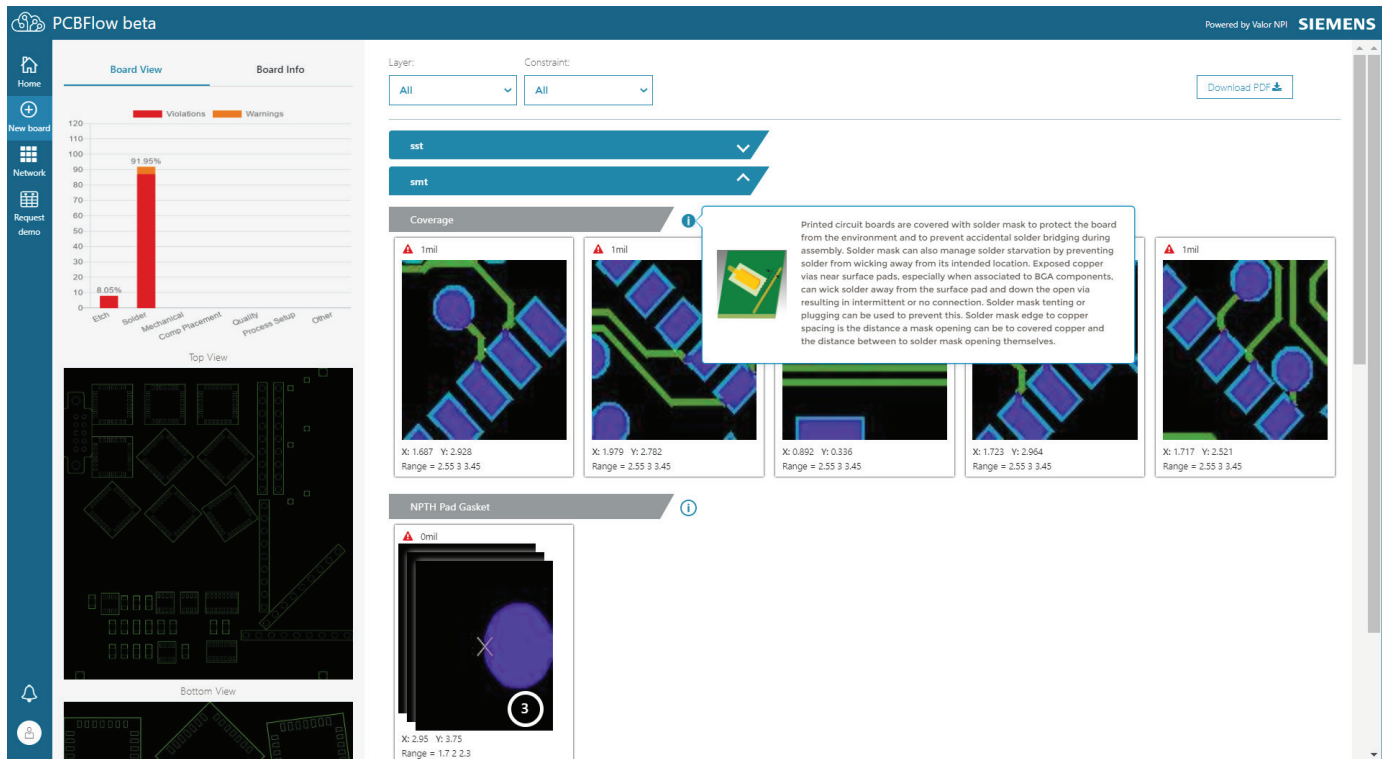
PCBflow reimagines the electronics design-to-production process. PCBflow lets you optimize your designs for manufacturing at any time, from any location and with no IT investment.

An instant DFM analysis, based on valid manufacturing set of constraints



PCBflow enables a two-way workflow, left and right, between designers and manufacturers.

PCBflow



PCBflow report.

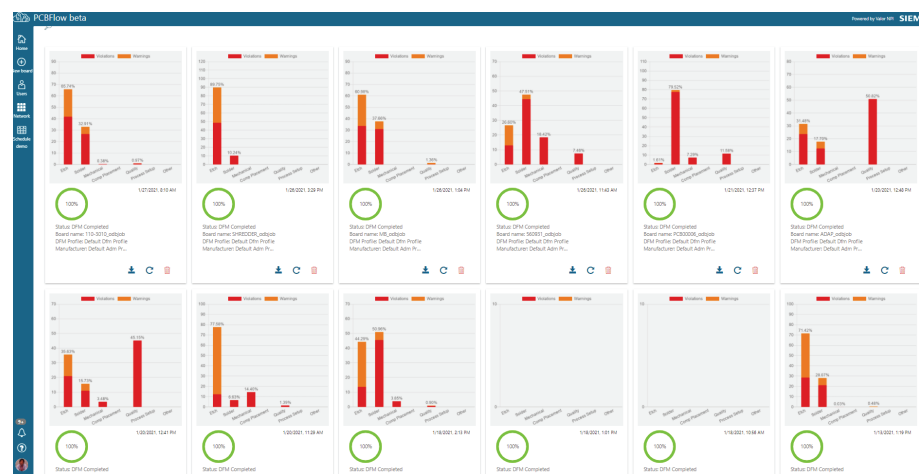
PCBflow is the beginning of a broad collaborative platform that aims to connect the electronic manufacturing ecosystem, simplify collaboration and streamline the design-to-manufacturing process.

Create mature designs earlier

PCBflow guides designers through the manufacturability design errors, including manufacturing risk analysis. In addition, PCBflow allows designers to review and track updates in the context of design violations, minimizing back-and-forth with manufacturing partners and making it simple to validate and optimize designs.

Secure cloud environment

PCBflow incorporates the strict security standards of Siemens software, reducing risk and protecting intellectual property (IP). With PCBflow, designers can run DFM analysis safely in a secure cloud environment.



PCBflow dashboard.